

HKAI LAB PORTFOLIO AT A GLANCE

CONNECT

THRIVE

SUCCEED



www.hongkongai.org



info@hongkongai.org

ABOUT HKAI LAB

Website www.hongkongai.org

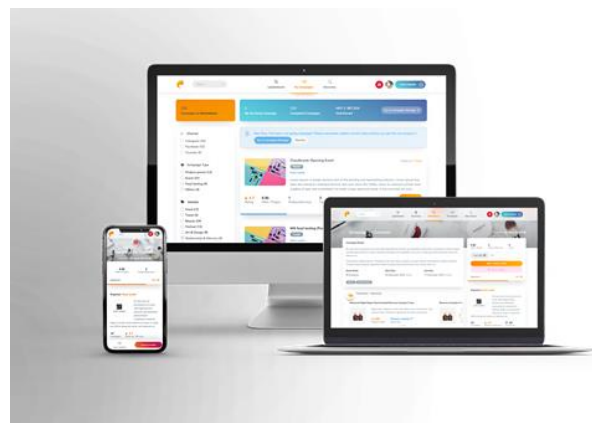
HKAI LAB is a non-profit platform jointly established by Alibaba Hong Kong Entrepreneurs Fund and SenseTime, with support from Hong Kong Science & Technology Parks Corporation, Alibaba Cloud and Alibaba DAMO Academy. With the aim to empower local AI startups, nurture local AI talents and boost the development of AI technology in Hong Kong, HKAI LAB organizes two accelerator cohorts every year, and provides startups with a 12-month Accelerator Program focusing on commercializing their AI inventions and technologies developed at the lab.



ADVWHERE LIMITED (Cloudbreakr)

Sector **Marketing Intelligence** | Funding Stage **Series A** | Website www.cloudbreakr.com

Cloudbreakr is a big data and AI-powered media analytics company, with business operations in Hong Kong, Taiwan, Malaysia and Thailand. Utilizing the latest marketing technology applications and integrated solutions, Cloudbreakr provides international clients with influencer and content discovery tool, customized analysis report and influencer marketing strategy. It also offers its platform solutions to marketers around the regions.



Co-founders - Edwin Wong, Rudy Chan & Leo Siu

Edwin Wong, co-founder of Cloudbreakr, once described the best influence as something that "explains the secret behind the influence". To Edwin, it's all about creating an influence that leads the trend. He believes that if one can understand the influence, they can predict an upcoming trend. That's why the most amazing achievement to Cloudbreakr is to discover influential groups that can turn a simple message into the next hot topic.

Rudy Chan graduated from University of Toronto majoring in Finance and has 5+ years of experience in business consulting at KPMG before joining Cloudbreakr. As a co-founder of Cloudbreakr, he is responsible for operation, accounting, data analytics and other supporting work.

Leo Siu, co-founder of and Head of Sales at Cloudbreakr, achieved HKD1.3 million revenue in 2018 and managed to obtain more than 100 brands (e.g. SK-II, Estée Lauder, Chanel, Clarins, Uber etc.) as portfolio clients in less than a year. He graduated from PolyU with a major in BBA.



HKAI LAB PORTFOLIO

APPLIED TECHNOLOGY GROUP LIMITED (ClinicOne)

Sector *Medical and Health Tech* | Funding Stage *Series A* | Website *www.ATG.ai*

ClinicOne is a one-stop healthcare and medical diagnostic platform for precise medication, seamless patient journey and AI-powered health record management, developed in preparation for the new generation of smart clinics.



ClinicOne™ • Next Gen • Smart Clinic

Real time Vital sign

Telemedicine & Selfienostic

HEALTH ME2 Patient Wristband

ClinicONE Precision Treatment

Founders, Technology Platform & Medical Professionals

CEO / CTO



LAM CHI MAN, EMBA, IEEE
Co-Founder of ClinicOne
Former APAC Development Director, Oracle
Co-founder of Fusion System & RECKON

COO



HENRY WONG
Co-Founder of ClinicOne
Co-Founder of IT Link

Chief Software Architect



RON TAM
Co-Founder of ClinicOne
Regional IT award winner

Chief Security Architect



DING LAM
Co-Founder of ClinicOne
Regional IT award winner

Chief Medical Officer



DANIEL YANG, M.D., PH.D.
President, G2 Innovative Medhealth Inc. (G2-IMH)
President, G2 Biopharma Services Inc. (G2-BPS)

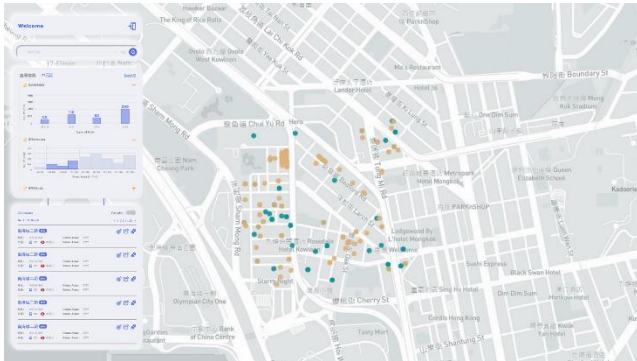


HKAI LAB PORTFOLIO

ARICAL LIMITED

Sector *PropTech - GeoAI Platform* | Funding Stage *Seed* | Website *arical.ai*

Arical's GeoAI platform integrates transdisciplinary data to offer location intelligence to clients including property agencies, developers, investment funds, retailers, marketing firms and NGOs, empowering them to uncover hidden patterns, gain actionable insights and increase competitive advantages, with the vision to collectively accelerate the advent of smart liveable cities.



Interactive location intelligence visualization interface



Prescriptive GeoAI analytics



Clement Tien - CEO

Clement is passionate about improving people's lives with architecture and technology. He was responsible for the architectural design and project management of real estate developments in the U.S. and Hong Kong.

San Wong - CTO

San firmly believes that data-driven urban development and smart cities can and will be achieved in the future.

He also conducted R&D on logistics robots and self-driving cars.

HKAI LAB PORTFOLIO

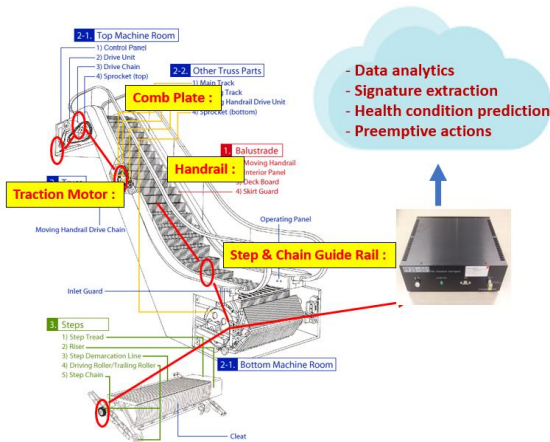
AVARON TECHNOLOGIES LIMITED

Sector **Smart City** | Funding Stage **Seed** | Website www.avarontechs.com

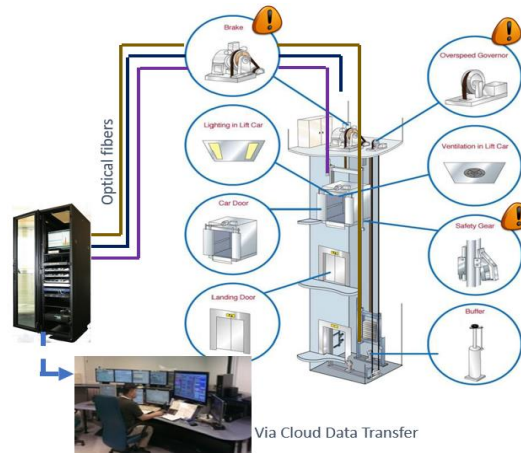
Avaron offers AI-powered turnkey product solutions for Smart Building and Smart Mobility applications. Utilizing green technologies and a proprietary Smart Neural Optical Sensing Network, the solutions measure a wide range of parameters with enhanced sensitivity to accomplish effective predictive monitoring of mission-critical components used in elevators, escalators, air-conditioners and fire detection.



Escalator Monitoring

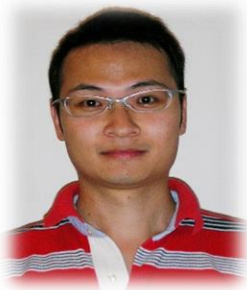


Elevator Monitoring



- Technologies - Smart Neural Sensing Network for **ALL** critical components' monitoring
- Early detection of developing defects using Artificial Intelligence Signal Recognition
- Use of Internet of Things (IoT) and cloud computing for smart predictive maintenance

Co-founders - Davis Cheng & Jonathan Chee



Davis Cheng

- PhD in Applied Physics
- 20 years+ of experience in product development and project management in optical telecommunication products
- Expertise in data analytic methodology and operation



Jonathan Chee

- 30 years+ of experience in private equity, M&A, investment management, corporate finance and PE operations in USA and Asia
- Provides Avaron with business advice and investment strategy
- Chairman of B.O.D. of Avaron



HKAI LAB PORTFOLIO

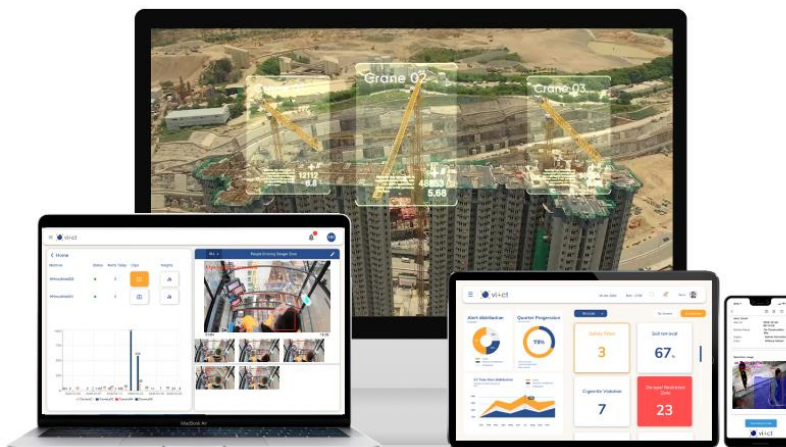
CUSTOMINDZ LIMITED (viAct)

Sector **ConTech** | Funding Stage **Seed** | Website www.viact.ai

Granted Top 100 Global ConTech startups by Buildworld and PwC in 2019, viAct is Asia's first AI monitoring integration platform for the construction industry. viAct's proprietary vision cloud platform connects all types of IP cameras to automate construction monitoring in real time in order to help the government, property developers and construction enterprises to improve safety, increase productivity and profitability.



Industrial Grade AI Cloud Platform



Safety measures detection • Worker behavior tracking • Work progress reporting • Machinery log data analysis



Gary Ng - Co-founder & CEO

Gary is an Alpreneur, graduated as a building engineer and has years of experience working in a construction consultancy firm. Before his AI journey, he worked as a general manager at world-leading 3D fashion tech company EFI Optitex, as well as a senior management at NASDAQ-listed technology enterprise Stratasys. In 2015, he was awarded the Best Regional Senior Executive in Stratasys, with the highest Y2Y sales growth of 85%.

HKAI LAB PORTFOLIO

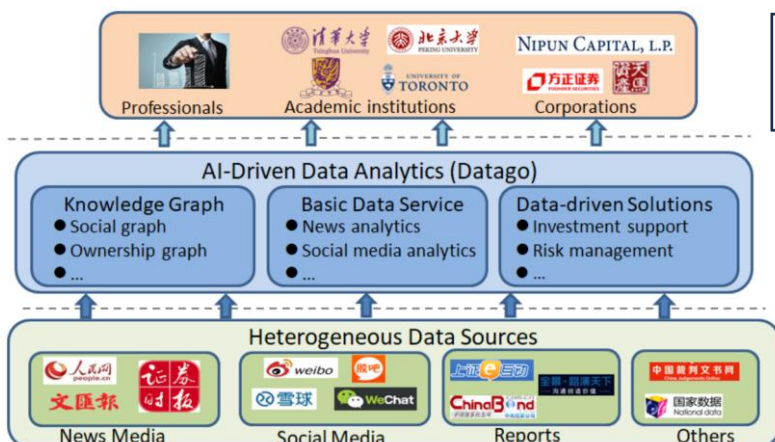
DATAGO TECHNOLOGY LIMITED

Sector **FinTech** | Funding Stage **Series A** | Website www.datago.com.hk

Datago Technology Limited is a FinTech expert specializing in Chinese text data analytics in the financial sector of mainland China and Hong Kong. Utilizing big data and artificial intelligence technology, Datago mines quantitative, easy-to-use structured data from large-scale text data such as news, reports and social media in real time, so that clients can efficiently incorporate the information into their trading strategies and risk management tools in order to enhance return and reduce risk.



Datago's clientele includes hedge funds, security brokers and research institutions from all over the world such as mainland China, Hong Kong, the US and Canada.



Datago Technology Limited aims to provide AI-driven text data analytics for participants in the capital market in Greater China.



Dr. Yi Long - Co-founder & CEO

- 12 years+ experience in data mining
- Postdoctoral researcher in FinTech, CUHK
- PhD (HKU)



T.J. Wong - Co-founder

- Professor of USC
- Former Dean of the CUHK Business School
- A leader in research, top papers and number of citations in the Chinese capital market



Tianyu Zhang - Co-founder

- Professor of CUHK
- Cheung Kong Scholars
- Director of CUHK CIG
- Director of CUHK(SZ) SFI

HKAI LAB PORTFOLIO

DATAx LIMITED

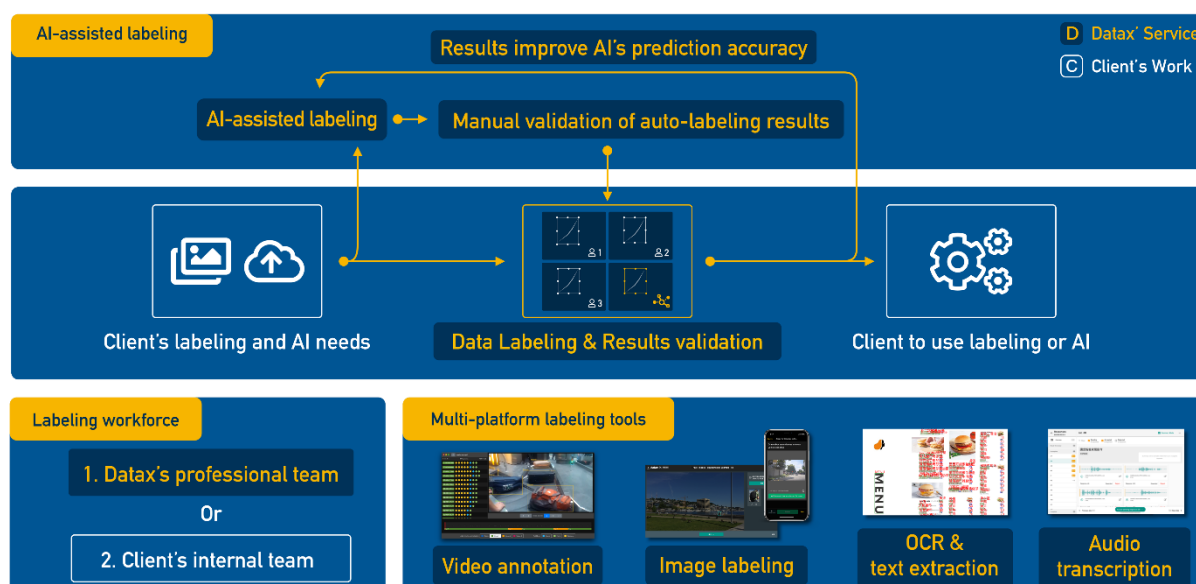
Sector **Data Preparation** | Funding Stage **Seed** | Website <https://datax.io>

Datax helps businesses to explore machine automation and learning on their own data.



Datax offers:

1. AI-assisted data labeling tools, data health check and data augmentation
2. Ready-to-use AI solutions
3. AI training, deployment and continuous learning



Kevin Wong – Founder

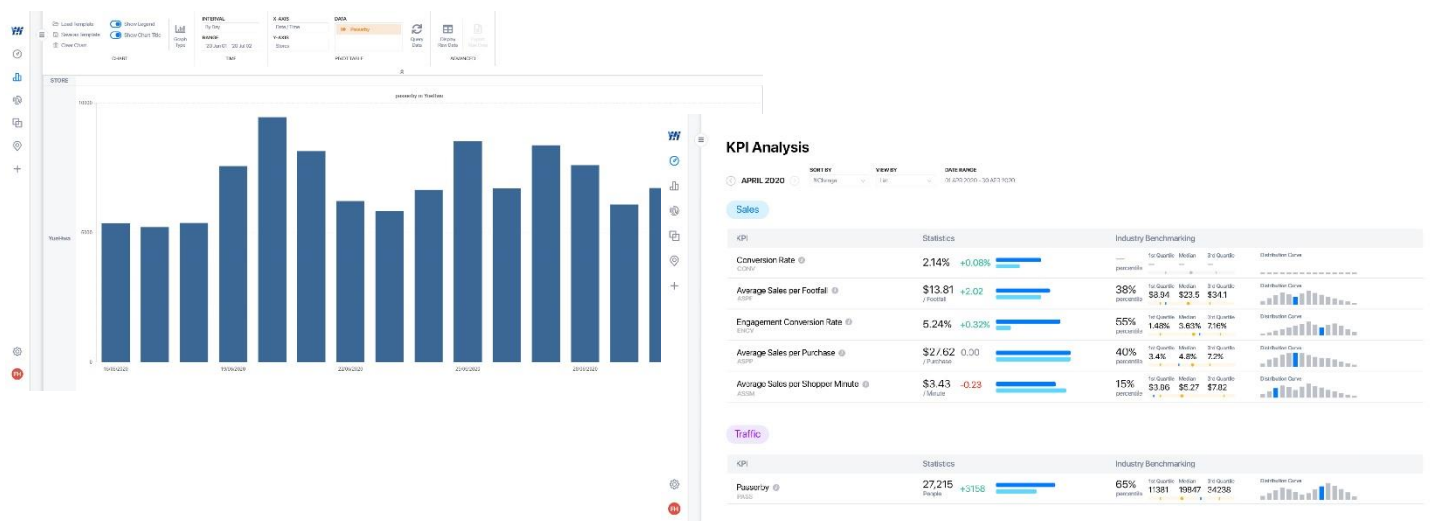
Kevin is a young entrepreneur. After completing his bachelor's degree of BBA(IS) and Computer Science at HKU, he teamed up with a few energetic technical partners to build AI-related solutions that tackle pain points faced by AI developers and enterprises who are considering to adopt AI solutions. During the COVID-19 pandemic, his team has developed and launched two solutions: one helps SMEs evaluate loan eligibility by analyzing bank statements and company documents with Optical Character Recognition (OCR), the other one helps video content producers prepare Cantonese subtitles automatically with speech-to-text technology.

HKAI LAB PORTFOLIO

DAYTA AI LIMITED

Sector **Smart Retail** | Funding Stage **Seed** | Website www.dayta.ai

Dayta is an AI software company that develops a cloud-based ecosystem, which integrates different SaaS models and computer vision applications. Dayta's flagship product, Cyclops, connects to any surveillance camera in order to help clients acquire, evaluate and interpret in-store data such as traffic, demographics and heatmap.



Tu Hau Kwan Patrick - CEO

A serial entrepreneur, Patrick graduated from HKUST majoring in BBA, and has been dedicated to building startups since university. Prior to Dayta, he had founded an EduTech startup. Now he is responsible for Dayta's strategy, execution and management.



Chu Hin Ching Alex - CFO

Graduated from HKUST with a major in Accounting and Finance, Alex is an experienced curator and designer. He is responsible for Dayta's finance, legal and compliance and human resources.

Ho Chun Ting Eugene - CTO

Eugene graduated with a Business Analysis degree, majoring in Artificial Intelligence. An AI enthusiast and practitioner, Eugene is responsible for Dayta's data science, research and software engineering.

ECHOX TECHNOLOGY LIMITED

Sector **Medical and Health Tech** | Funding Stage **Seed** | Contact xfsun@echox-tech.com

EchoX Technology Limited is a Hong Kong-based startup that aims to make ultrasound imaging an accessible and ubiquitous tool for the medical industry to solve common and everyday problems in healthcare. The founding team consists of experts in different fields, including medical imaging analysis and deep learning, mathematical algorithms, optimization and ultrasound imaging techniques.



❖ Effusion Automatic Detection(EchoEffusion)



Figure 1 Prototype GUI of EchoEffusion by EchoX

- Function: Detect transudative effusion and exudative effusion.
- Two key buttons for detection and computation of effusion volume.

❖ Ultrasound-Guided Peripheral IV Placement

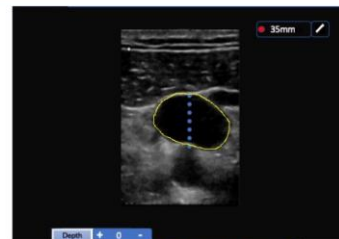
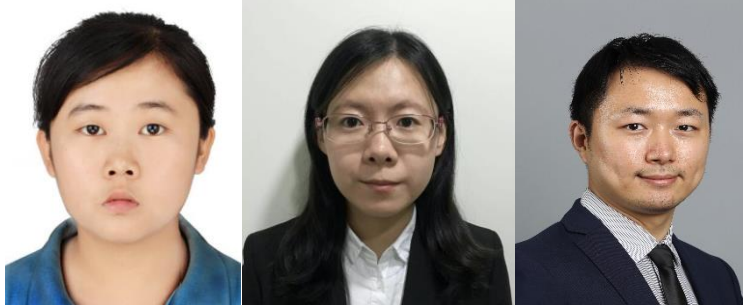


Figure 2 Prototype GUI of Ultrasound-Guided Peripheral IV Tool by EchoX

- Function: Two key buttons to adjust the depth and measure vein.



Sun Xiaofei

Guo Weiwei

Li Dan

Co-founder - Sun Xiaofei, MPhil (CUHK)

Other co-founders:

Guo Weiwei, PhD (CUHK)

Li Dan, BEng (CUHK)

HKAI LAB PORTFOLIO

FARSEER LIMITED

Sector **Smart Investment Research** | Funding Stage **Series A** | Website **www.farseerbi.com**

Farseer is an AI-powered smart investment analytics platform that delivers cloud and API solutions around risk management and investment research for a more efficient financial ecosystem. Farseer's clients include asset managers, security brokers and listed companies across regions.



Combining search, text analytics, knowledge graph and machine learning algorithm, Farseer's proprietary cloud engine extracts financial-related alternative data from across millions of unstructured context in real time through 24/7 web and app access, based on clients' criteria and output/alert format and with user-defined sentimental weightings, in order to significantly reduce, digitize and automate risk management and research effort.



Stanley Chan - Co-founder & CEO

- Vice President of UBS Private Bank
- Founder of Aviate Global, which was successfully trade-sold.
- Vice President of Citigroup Asia Pacific Consumer Equity Research
- A Council Member of Greater Bay Young Entrepreneurs Association



Tim Xue - Co-founder & CTO

- Graduated from University of Electronic Science and Technology of China
- Founder of IObit, invested by IDG & Tencent, and ultimately listed in HKSE
- 15 years of technology development experience



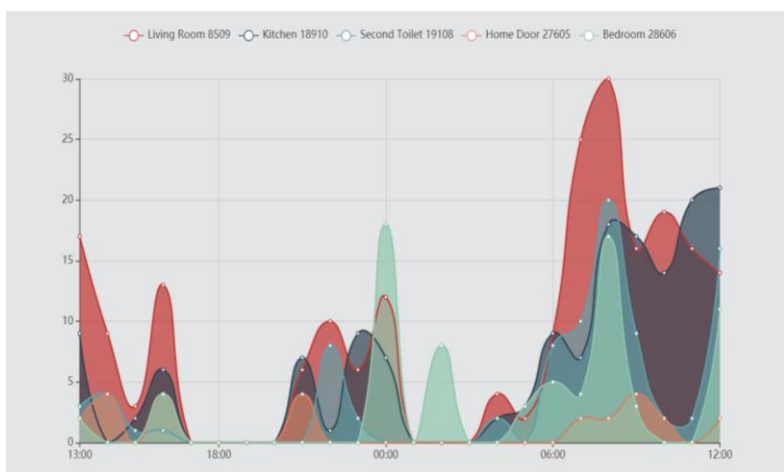
HKAI LAB PORTFOLIO

MY JOY PLUS TECHNOLOGY LIMITED

Sector **Smart Living** | Funding Stage **Seed** | Website www.myjoyplus.com

“My Joy +” is a smart home system specially designed for the elderly. With different sensors and own developed AI, the system analyzes user's living habit and helps user detect early symptoms of diseases such as dementia, stroke, depression for timely follow-up and treatment.

MY JOY+



Co-founders:

- **Billy Tang** - CEO
- **Celia Leung** - Project Director
- **Vanson Leung** - CTO
- **Aries Lee** - Director

HKAI LAB PORTFOLIO

PLATINUM BLACK LIMITED (SocialFace)

Sector **Media** | Funding Stage **Seed** | Contact info@socialface.ai

Platinum Black's SocialFace is an intelligent platform that supports social events held in the Greater Bay Area of China. It uses advanced technologies such as big data analysis and artificial intelligence algorithms to help event organizers and attendees improve social networking efficiency and quality. Three core functions of SocialFace include intelligent AI report, instant photo album sharing, and smart network recommendation.



Geyang Chai
Co-founder / CEO

With an MPA from Brown University and a bachelor's degree in communication from Ohio University, Chai has extensive experience in financial services and technology. His leadership focuses on overall strategy and operation.



Cheung Pak Ming
Co-founder / CTO

With a PhD in AI from HKUST, Cheung has 30+ publications on social image and owns a proprietary facial recognition technology.

HKAI LAB PORTFOLIO

POKEGUIDE LIMITED

Sector **Tourism** | Funding Stage **Seed** | Website **www.pokeguide.com**

Pokeguide Limited provides a geographical smart city solution for the general public, consumer brands, shopping malls and merchants. The Pokeguide app was launched in several major cities in the world with hundreds of thousands of downloads, serving users with AI and VR technologies, making it a widely acclaimed app across cities.



We make locations more valuable



Co-founders - Brian Hui, Andre Hui & Ian Fung

Brian Hui - 10+ years of experience in new business leadership and business development at IBM and PwC

Andre Hui - Successful track record of social media marketing and product design

Ian Fung - 5+ years of experience in mobile app and web application development for financial institutions and MNCs



HKAI LAB PORTFOLIO

QUIKEC INTERNATIONAL LIMITED

Sector **B2B QA/QC Solution** | Funding Stage **Seed** | Website www.quikec.com

Quikec utilizes AI, big data and patented smart devices to help B2B buyers and manufacturers add value and efficiency to their Quality Assurance and Quality Control activities.



Quikec – Product Suite (See www.Quikec.com for product details)

a QuikConvert
QuikConvert is a digital file converter that is able to convert various file formats (eg. PDF, Excel, Word) with multiple layouts into structured digital data. Product images can also be included. The converted data can then be used for supply chain activities at the Quikec cloud platform, or integrated with your company's IT systems.

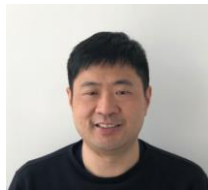
b QuikQuality Cloud
QuikQuality is a community end-to-end Cloud-based platform to optimize realtime collaboration among buyers, suppliers and service providers along the quality management activities worldwide. Quikec provides an industry best-in-class solution to speed up the Quality and Inspection process. Users can take immediate action once the information has been populated, which minimizes the impact and resolves problems in minimum time thus decreasing the cost of non-quality.

c QuikMeasure
The Patented QuikMeasure is a digital ruler designed to digitally capture measurement results and transfers data to the QuikCloud applications.



Peter Li - Co-founder & President

Peter has more than 30 years of industry experience in IT and B2B supply chain through providing strategic and global business counseling to many MNCs in retail and manufacturing.



Ted Wu - Co-founder & CEO

Ted has more than 25 years of industry experience in IT and B2B supply chain through working with many MNCs in retail and manufacturing. He specializes in innovative technology, R&D and customer project management.



Evan Chau - Co-founder & CTO

Evan has more than 16 years of industry experience in IT and B2B supply chain through working with many MNCs in retail and manufacturing. He specializes in R&D, AI, innovation and infrastructure.

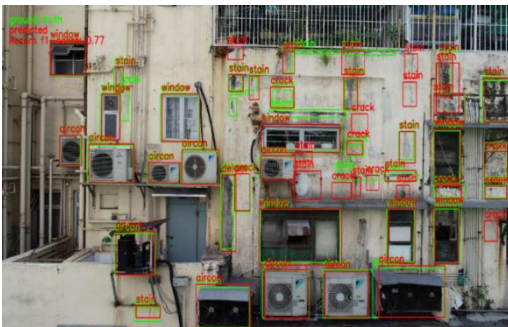
HKAI LAB PORTFOLIO

RASPECT INTELLIGENCE INSPECTION LIMITED

Sector *AI-powered Predictive Inspection for Architecture* | Funding Stage *Series A* | Website <https://raspect.ai>

RaSpec is an AI deep tech company for smart city solution, with a vision to create a safer, smarter and greener society through AI inspection, IoT sensing and predictive maintenance technology solutions. RaSpec builds patented safety AI technology especially for smart buildings and smart infrastructure. RaSpec offers AI SaaS solutions as well as AI services for property owners, property management companies and government. As a pioneer technology provider for the safety monitoring of skyscrapers, its solution dramatically increases the safety of buildings and infrastructure by boosting the efficiency and accuracy of inspection and monitoring at a lower cost. The technology has been well-proven with numerous reputable landmark properties in Hong Kong. As Hong Kong is the leading market in skyscraper construction, RaSpec's strong presence in the Hong Kong market effectively predicts a strong future success in the global market. RaSpec's breakthrough technology has created exponential tractions and growth in local and regional markets, and its product portfolio has expanded from building façade inspection to building services monitoring and predictive maintenance in systems such as lifts, escalators, HVAC etc.

R A S P E C T
AI-powered Predictive Inspection for Architecture.



Robotics Inspection

Automated remote inspection of façade and pipes
Unmanned robotics NDT inspection



IoT 24x7 Inspection

Data-driven inspection to reduce machine downtime and increase safety



AI-powered Inspection

Structural integrity, material deterioration, cracks and corrosion detection



Predictive Inspection

Simulation, performance model and parametric analysis



Founder - Sun Chi Chun Harris

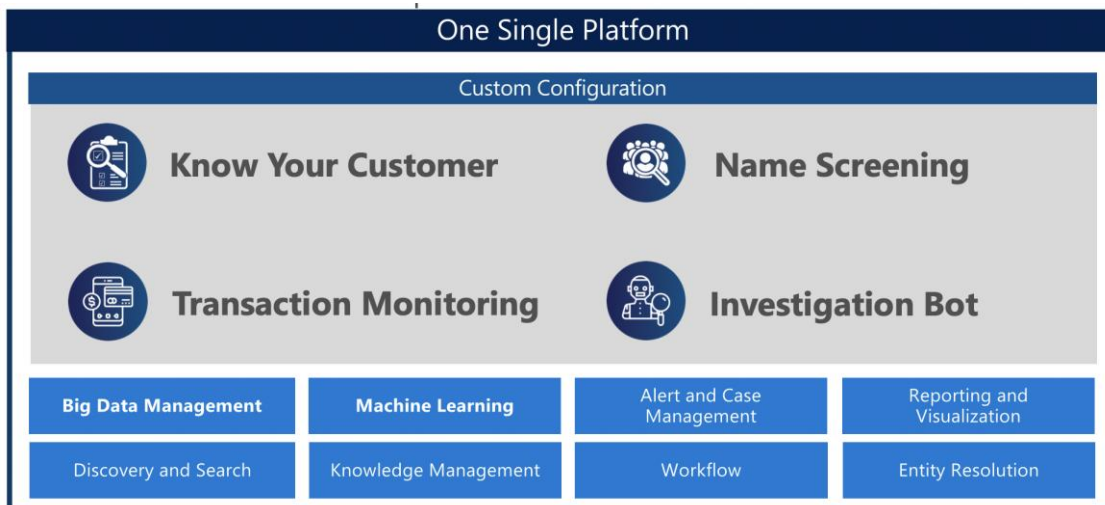
Graduated with a master degree in computer science from CUHK and a bachelor's degree in computer science from HKU, Harris is a serial entrepreneur with 15+ years of startup experience and corporate experience, and was one of founding members of Innovation Centre of Cathay Pacific Airways.

HKAI LAB PORTFOLIO

REGTICS LIMITED

Sector **RegTech** | Funding Stage **Seed** | Website www.regtics.com

Regtics Limited provides financial institutions with an AI- and big data-powered solution to ensure the compliance of international and local anti-money laundering (AML) and counter-financing of terrorism regulations. The solution contains four main modules: transaction monitoring, customer due diligence, name screening and investigation bot.



- Customer holistic view
- Improve efficiency and effectiveness
- Lower the operation risk
- AI embed intelligence engine
- Network analysis engine
- NLP recommendation engine



H.M. Lau – Co-founder

Lau is a data scientist who provides current and prospective customers with advisory and implementation support in big data management, advanced analytics, machine learning and artificial intelligence. With academic and teaching backgrounds in statistics, he holds a pivotal position in providing advice around analytics during solution development, implementation, and project closeout.



HKAI LAB PORTFOLIO

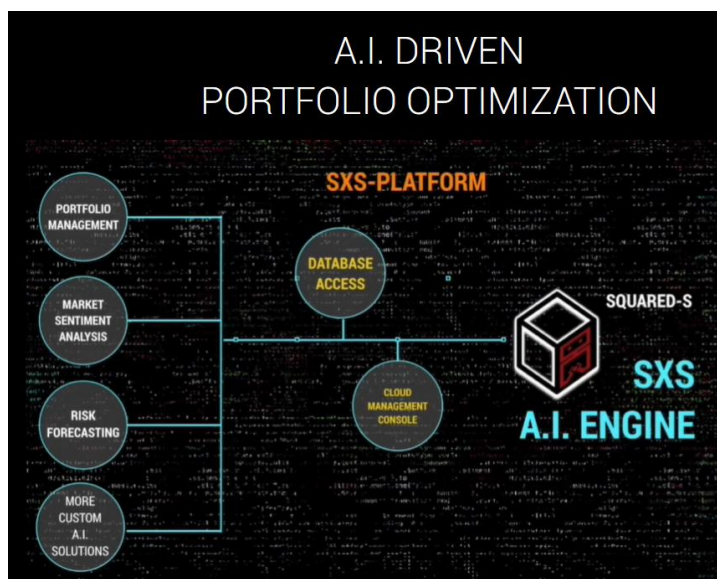
SQUARED-S ARTIFICIAL INTELLIGENCE (SQUARED-S HOLDINGS LTD)

Sector *FinTech* | Funding Stage *Seed* | Website www.squared-s.com

Squared-S is a B2B FinTech company that provides financial institutions with an AI-driven solution for investment and risk analysis. Its key technology includes AI models for portfolio optimization, credit analysis and risk forecasting.



SQUARED-S
Artificial Intelligence
www.squared-s.com



Soujit Ghosh
Co-founder / CEO

- 17 years of derivatives trading and modeling expertise
- Ex-Equity Derivatives Trader at Goldman & J.P. Morgan
- MA in Statistics, Harvard University
- MA in Engineering, Cambridge University



Dr. Seth Huang
Co-founder / Head of AI Research

- Has 10+ years of AI research experience in finance and 6 patents on AI predictive systems
- PhD in Economics, Cornell University

THANK YOU

CONNECT

THRIVE

SUCCEED



www.hongkongai.org



info@hongkongai.org